

EXHIBIT "A"

SITE PLAN

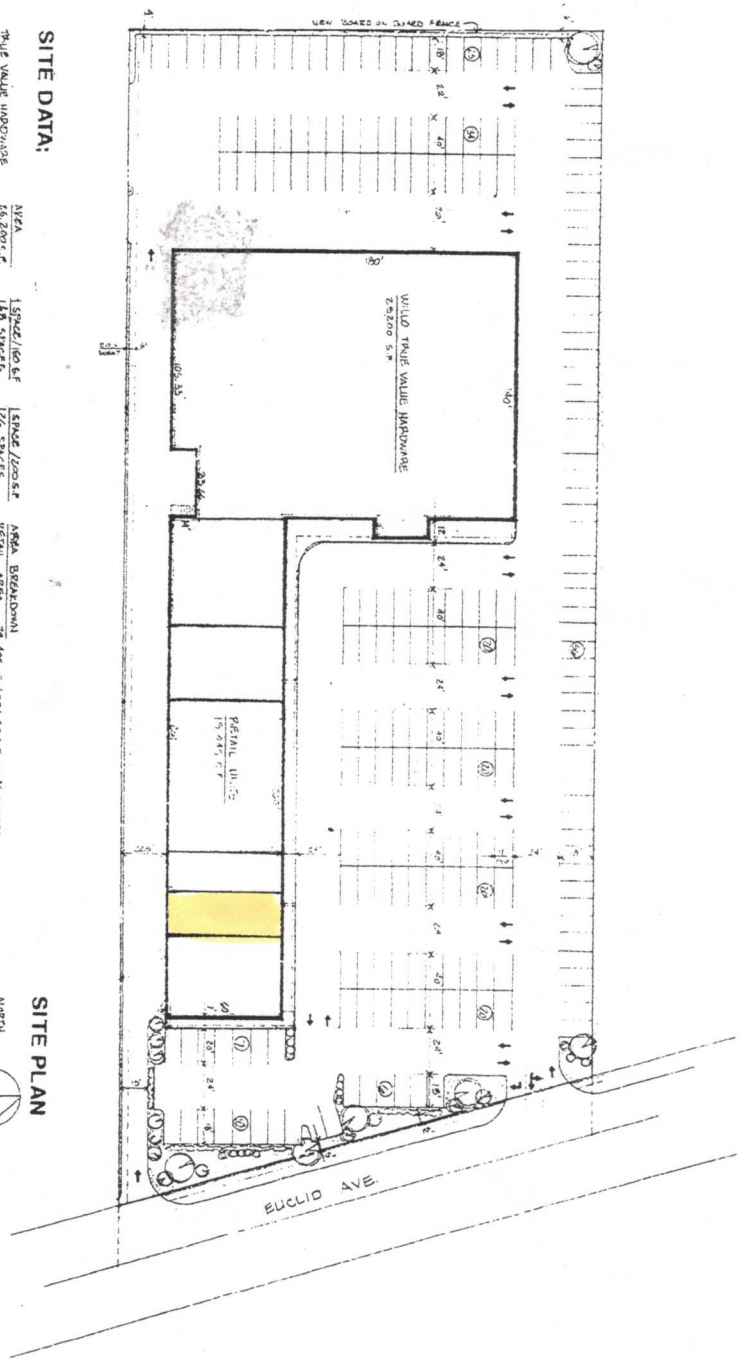
**SITE DATA:**

TRUCK VALUE HARDWARE	16,200 S.F.	15,000 S.F.	15,000 S.F.	15,000 S.F.	15,000 S.F.
RETAIL UNIT	5,245 S.F.	10,490 S.F.	10,490 S.F.	10,490 S.F.	10,490 S.F.
TOTAL AREA	21,445 S.F.	25,490 S.F.	25,490 S.F.	25,490 S.F.	25,490 S.F.

TOTAL PARKING PROVISIONS = 218 SPACES

AREA	15,000 S.F.	15,000 S.F.	15,000 S.F.	15,000 S.F.	15,000 S.F.
TRUCK VALUE HARDWARE	15,000 S.F.	15,000 S.F.	15,000 S.F.	15,000 S.F.	15,000 S.F.
RETAIL UNIT	5,245 S.F.	10,490 S.F.	10,490 S.F.	10,490 S.F.	10,490 S.F.
TOTAL AREA	21,445 S.F.	25,490 S.F.	25,490 S.F.	25,490 S.F.	25,490 S.F.

**SITE PLAN**



**SP**

3-17-91

6497

**WILLO TRUE VALUE HARDWARE CENTER**

EUCLID AVENUE  
WILLOUGHBY, OHIO

**JOSEPH L. MYERS, ARCHITECT**

34910 Ridge Road, Willoughby, Ohio, 44094

[216] 946-8300

